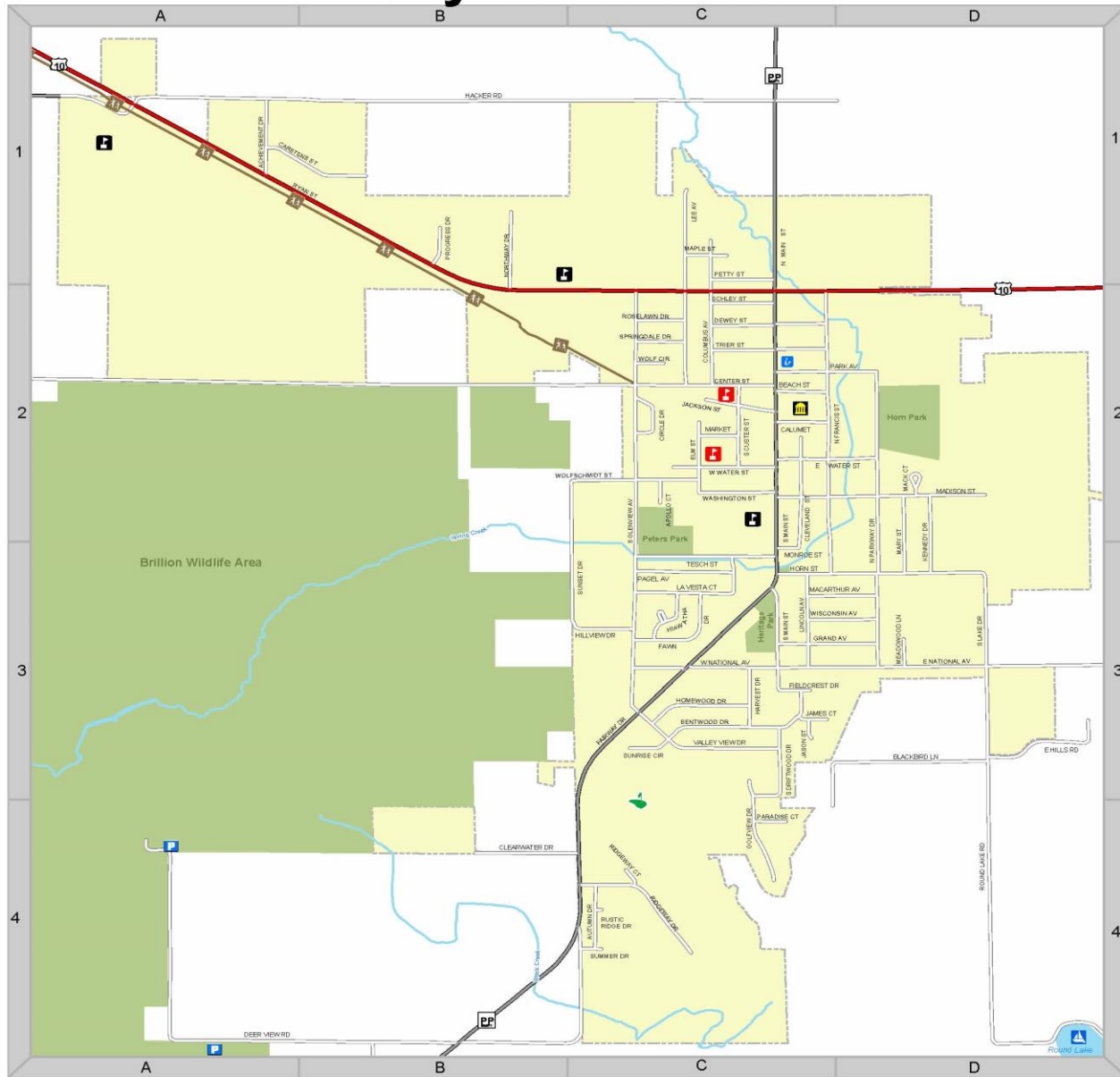
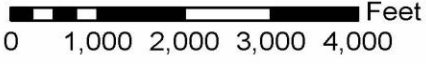


# City of Brillion



<b>A</b>	ACHIEVEMENT DR	A1	DEWEY ST	C2	HOMWOOD DR	C3	MONROE ST	C3	ROSELAWN DR	C2	V	VALLEY VIEW DR	C3
	APOLLO CT	C2	E HILLS RD	D3	HORN ST	C3, D3	N		ROUND LAKE DR	D3	W	W NATIONAL AV	C3
	AUTUMN DR	C4	E NATIONAL AV	C3, D3	HWY 10	A1, D2	N CUSTER ST	C2	ROUND LAKE DR	D3, D4	W	W RYAN ST	A1, B1-B2, C2
<b>B</b>			E RYAN ST	C2, D2	JACKSON ST	C2	N FRANCIS ST	C2	RUSTIC RIDGE DR	C2	W	W WATER ST	D2
	BEACH ST	C2	E WATER ST	C2, D2	JAMES CT	C3	N GLENVIEW AV	C1, C2	RYAN ST	C2	W	WASHINGTON ST	C2
	BENTWOOD DR	C3	ELM ST	C2	JASON CT	C3	N MAIN ST	D2	S CUSTER ST	C2	W	WASHINGTON ST	C2
	BLACKBIRD LN	C3, C4, D3	ESTATE DR	C3	K		N PARKWAY DR	D3	S DRIFTWOOD DR	C3	W	WISCONSIN AV	C3, D3
<b>C</b>			FAIRWAY DR	C3, C4	KENNEDY DR	D2, D3	NATIONAL RD	D3	S FRANCIS ST	C2, C3	W	WOLF CIR	C2
	CALLIMET ST	C2	FAWN DR	C3	L		NORTHWAY DR	B1, B2	S GLENVIEW AV	C2, C3	W	WOLFSCHMIDT ST	C2
	CARSTENS ST	A1, B1	FIELDCREST DR	C3	LA VESTA CT	C3	OAK ST	C2	S MAIN ST	C2, C3, C4			
	CENTER RD	A2-C2	GOLFVIEW DR	C3, C4	LEE AV	C1, C2	P		S PARKWAY DR	D2, D3			
	CENTER ST	C2	GRAND AV	C3, D3	LINCOLN AV	C3	PARADISE CT	C4	S SCHLEY ST	C2			
	CIRCLE DR	C2	H		M		PARK AV	C2, D2	SPRINGDALE DR	C2			
	CLEARWATER DR	B4, C4	HACKER RD	A1-C1	MACARTHUR AV	C3, D3	PINE ST	C1	S SUMMER DR	C4			
	CLEVELAND ST	C2, C3	HIAWATHA CT	C3	MACK CT	D2	PROGRESS DR	B1	SUNRISE CIR	C3			
	COLUMBUS AV	C1, C2	HIAWATHA DR	C3	MADISON ST	C2, D2	R		SUNSET DR	C2-C4			
	COUNTY HWY HR	A1	HILLVIEW DR	C3	MAPLE ST	C1	RIDGEWAY CT	C4	T				
	COUNTY HWY PP	B4, C1, C4			MARKET ST	C2	RIDGEWAY DR	C4	TESCH ST	C3			
<b>D</b>					MARY ST	D2, D3			TRIER ST	C2			
	DEER VIEW RD	A4-C4			MEADOWWOOD LN	D3							



<b>DEPARTMENT NAME:</b> <b>BRILLION FIRE</b>	<b>BOX ALARM TYPE:</b> <b>City Structure Fire Hydrant</b>	<b>EFFECTIVE DATE:</b> <b>March 1, 2019</b>	<b>MABAS DIVISION</b> <b>122</b>
<b>BOX ALARM #</b> <b>89-1-1</b>	<b>LOCATION OR AREA:</b> <b>CITY OF BRILLION</b>	<b>AUTHORIZED SIGNATURE:</b> <b>Chief Joe Diener</b>	

**LOCAL DISPATCH AREA:**

ALARM LEVEL	ENGINES	TENDERS	TRUCKS	SQUADS	EMS	CHIEFS	SPECIAL EQUIPMENT	CHANGE OF QUARTERS
STILL	Brillion 83 Brillion 84		Brillion 82	Brillion 81	Gold Cross	Brillion 89		
Working Still	Potter					Potter Reedsville (MTSO)	Reedsville (MTSO) - RIT	

**MABAS BOX ALARM:**

ALARM LEVEL	ENGINES	TENDERS	TRUCKS	SQUADS	AMBULANCES	CHIEFS	SPECIAL EQUIPMENT	CHANGE OF QUARTERS
BOX	Forest Junction Reedsville (MTSO)			Forest Junction	T. of Brillion First Responders	Forest Junction	WPS DPW-Water/Brillion	Notify Calumet Co. Emergency Management
2ND	Hilbert Hollandtown (BRSO)		Chilton	Chilton		Chilton		
3RD	Collins (MTSO) Valders (MTSO)	Potter Forest Junction Hilbert Reedsville (MTSO)	New Holstein			New Holstein Valders (MTSO)	Kempen or Janette Excavating  Salvation Army	*Contact MABAS WI Coordinator
4TH	Greenleaf (BRSO)	Harrison Chilton Wayside (BRSO) Morrison (BRSO)	Kiel (MTSO)					
5TH	Harrison	Stockbridge New Holstein Whitelaw (MTSO) Valders (MTSO) Branch (MTSO)	De Pere (BRSO)					

<b>MABAS INTER-DIVISIONAL REQUEST</b>	<b>1st Choice</b> <b>123</b> <b>WINNEBAGO</b>	<b>2nd Choice</b> <b>120</b> <b>FOND DU LAC</b>	<b>3rd Choice</b> <b>113</b> <b>SHEBOYGAN</b>	
---------------------------------------	---	---	---	--

**INFORMATION**  
 \*MABAS WI Coordinator/ WEM Duty Officer 1-800-943-0003 Option #2  
 American Red Cross - 1-800-236-8680 Option #9  
 Janette Excavating - 920-853-3454      Kempen Excavating - 920-756-3681

<b>DEPARTMENT NAME:</b> <b>BRILLION FIRE</b>		<b>BOX ALARM TYPE:</b> <b>Life Safety</b>				<b>EFFECTIVE DATE:</b> <b>March 1, 2019</b>	<b>MABAS DIVISION</b> <b>122</b>	
<b>BOX ALARM #</b> <b>89-1-3</b>		<b>LOCATION OR AREA:</b> <b>District Wide</b>				<b>AUTHORIZED SIGNATURE:</b> <b>Chief Joe Diener</b>		
<b>LOCAL DISPATCH AREA:</b>								
<b>ALARM LEVEL</b>	<b>ENGINES</b>	<b>TENDERS</b>	<b>TRUCKS</b>	<b>SQUADS</b>	<b>AMBULANCES</b>	<b>CHIEFS</b>	<b>SPECIAL EQUIPMENT</b>	<b>CHANGE OF QUARTERS</b>
<b>STILL</b>	Brillion 83 Brillion 84	Brillion 85	Brillion 82	Brillion 81	Gold Cross	Brillion 89		
<b>Working Still</b>	Potter Reedsville (MTSO)				Gold Cross Gold Cross Brillion First Responders	Potter Reedsville (MTSO)	Potter Ranger Reedsville Brush Truck	
<b>MABAS BOX ALARM:</b>								
<b>ALARM LEVEL</b>	<b>ENGINES</b>	<b>HELICOPTERS</b>	<b>MANPOWER</b>	<b>SQUADS</b>	<b>AMBULANCES</b>	<b>CHIEFS</b>	<b>SPECIAL EQUIPMENT</b>	<b>CHANGE OF QUARTERS</b>
<b>BOX</b>	Chilton	Theda Star	Collins (MTSO)	Chilton (JAWS)	Hilbert/Potter First Responders Reedsville First Responders (MTSO) Kaukaunda FD (OUSO) Kiel (MTSO) Valders (MTSO)	Chilton	Chilton-Brush Truck Calumet County Trailer  Theda Star Eagle 3	Notify Calumet Co. Emergency Management
<b>2ND</b>	Valders (MTSO)	Eagle 3 Flight for Life	Hilbert	Valders (MTSO) -Jaws	Harrison First Responders De Pere FD (BRSO) Two Rivers FD (MTSO)	Valders (MTSO)	MTSO Mass Casualty Trailer Valders (MTSO)-Brush Truck Flight 4 Life UW Med Flight	
<b>3RD</b>	Harrison	Eagle 3	Wayside (BRSO)	Harrison -Jaws	Collins First Responders (MTSO) Ashwaubenon (BRSO) Green Bay Metro FD (BRSO)	Harrison	Harrison Rescue Bus Collins (MTSO)-ATV Marshfield Helicopter Flight 4 Life	*Contact MABAS WI Coordinator
<b>4TH</b>	Hollandtown (BRSO)	Medflight (Madison)	Greenleaf (BRSO)	Hollandtown (BRSO)- Jaws	Stockbridge First Responders Mt. Calvary (FDSO) Janitowoc FD (MTSO)	Hollandtown (BRSO)	Stockbridge-UTV  St Anna - Brush Truck	
<b>5TH</b>	Branch (MTSO)		Kiel (MTSO)	New Holstein - Jaws	Kiel (MTSO) Valders (MTSO)		Kiel (MTSO)-ATV & Trailer	
<b>MABAS INTER-DIVISION REQUEST</b>		<b>1st Choice</b> 120 Fond du Lac	<b>2nd Choice</b> 127 Outagamie	<b>3rd Choice</b> 113 Sheboygan				
<b>SPECIAL INFORMATION</b>								
American Red Cross - 1-800-236-8680 Option #9 *MABAS WI Coordinator/ WEM Duty Officer 1-800-943-0003 Option #2 Theda Star-800-236-2066 Medflight Madison- 800-472-0111 Eagle 3- 877-332-4533 Flight for Life- 800-334-1000								

<b>DEPARTMENT NAME:</b> <b>BRILLION FIRE</b>	<b>BOX ALARM TYPE:</b> <b>BRUSH FIRE</b>	<b>EFFECTIVE DATE:</b> <b>March 1, 2019</b>	<b>MABAS DIVISION</b> <b>122</b>
<b>BOX ALARM #</b> <b>89-1-4</b>	<b>LOCATION OR AREA:</b> <b>District AREA 1 &amp; 2: Areas West of Long Lake Road (Calumet County)</b>	<b>AUTHORIZED SIGNATURE:</b> <b>Chief Joe Diener</b>	

**LOCAL DISPATCH AREA:**

ALARM LEVEL	ENGINES	TENDERS	TRUCKS	SQUADS	AMBULANCES	CHIEFS	SPECIAL EQUIPMENT	CHANGE OF QUARTERS
<b>STILL</b>	Brillion 83 Brillion 84	Brillion 85	Ladder 82	Brillion 81	Gold Cross	Brillion 89	6x6	
<b>Working Still</b>	Potter	Potter Reedsville (MTSO) Forest Junction				Potter	Potter - ATV Reedsville (MTSO) - Brush Truck	

**MABAS BOX ALARM:**

ALARM LEVEL	ENGINES	TENDERS	TRUCKS	SQUADS	AMBULANCES	CHIEFS	SPECIAL EQUIPMENT	CHANGE OF QUARTERS
<b>Box</b>	Reedsville (MTSO) Forest Junction	Hilbert Hollandtown (BRSO) Collins (MTSO)		Forest Junction	T. of Brillion First Responders	Forest Junction Reedsville (MTSO)	Harrison - Brush Truck Harrison - 4x4 Chilton - Brush Truck	Notify Calumet Co. Emergency Management
<b>2nd</b>	Greenleaf (BRSO) Hollandtown (BRSO)	Chilton Harrison Greenleaf (BRSO)		Chilton		Chilton	New Holstein - 4x4 Collins (MTSO) - 4x4	
<b>3rd</b>	Wayside (BRSO) Hilbert	Morrison (BRSO) Whitelaw (MTSO) Wayside (BRSO)		Greenleaf (BRSO)			Kiel (MTSO) - Brush Truck St. Nazianz (MTSO)- ATV	*Contact MABAS WI Coordinator
<b>4TH</b>		Stockbridge Valders (MTSO) Mechanville (MTSO)		New Holstein		New Holstein	Valders (MTSO)-Brush Truck Wayside (BRSO)-Brush Truck	
<b>5th</b>		New Holstein Branch (MTSO) Kellnersville (MTSO)					Whitelaw (MTSO)-Brush Truck Buchanan (OUSO)	
<b>MABAS INTER-DIVISION REQUEST</b>		<b>1st Choice</b> 123 Winnebago	<b>2nd Choice</b> 120 Fond du Lac	<b>3rd Choice</b> 113 Sheboygan				

**INFORMATION**

\*MABAS WI Coordinator/ WEM Duty Officer 1-800-943-0003 Option #2  
American Red Cross - 1-800-236-8660 Option #9

<b>DEPARTMENT NAME:</b> <b>BRILLION FIRE</b>		<b>BOX ALARM TYPE:</b> <b>WATER/ICE RESCUE</b>				<b>EFFECTIVE DATE:</b> <b>March 1, 2019</b>		<b>MABAS DIVISION</b> <b>122</b>	
<b>BOX ALARM #</b> <b>89-1-5</b>		<b>LOCATION OR AREA:</b> <b>DISTRICT WIDE (Areas 1 &amp; 2)</b>				<b>AUTHORIZED SIGNATURE:</b> <b>Chief Joe Diener</b>			
<b>LOCAL DISPATCH AREA:</b>									
<b>ALARM LEVEL</b>	<b>ENGINES</b>	<b>DIVE TEAM</b>	<b>TRUCKS</b>	<b>SQUADS</b>	<b>AMBULANCES</b>	<b>CHIEFS</b>	<b>SPECIAL EQUIPMENT</b>	<b>CHANGE OF QUARTERS</b>	
<b>STILL</b>	Brillion 83		Brillion 82	Brillion 81	Gold Cross	Brillion 89	Valders (MTSO) - Cold Water Rescue		
<b>WORKING STILL</b>		Calumet County Dive Team			T. of Brillion First Responders	Valders (MTSO)			
<b>MABAS BOX ALARM:</b>									
<b>ALARM LEVEL</b>	<b>ENGINES</b>	<b>DIVE TEAM</b>	<b>TENDERS</b>	<b>SQUADS</b>	<b>AMBULANCES</b>	<b>CHIEFS</b>	<b>SPECIAL EQUIPMENT</b>	<b>CHANGE OF QUARTERS</b>	
<b>BOX</b>				Forest Junction	Reedsville First Responders	Harrison	Harrison Ice/Water Rescue Harrison Bus	Notify Calumet Co. Emergency Management	
<b>2ND</b>		Sheboygan County Dive Team				Stockbridge	Stockbridge - Ice/Water Rescue		
<b>3RD</b>						Chilton	Chilton - Ice/Water Rescue	*Contact MABAS WI Coordinator	
<b>4TH</b>		Brown County Dive Team				Wrightstown (BRSO)	Wrightstown Ice/Water Rescue (BRSO)		
<b>5TH</b>									
<b>MABAS INTER-DIVISION REQUEST</b>		<b>1st Choice</b> <b>123</b> <b>WINNEBAGO</b>	<b>2nd Choice</b> <b>120</b> <b>FOND DU LAC</b>	<b>3rd Choice</b> <b>113</b> <b>SHEBOYGAN</b>					
<b>INFORMATION</b> *MABAS WI Coordinator/ WEM Duty Officer 1-800-943-0003 Option #2 American Red Cross - 1-800-236-8680 Option #9									

<b>DEPARTMENT NAME:</b> Brillion Fire	<b>BOX ALARM TYPE:</b> Hazmat	<b>EFFECTIVE DATE:</b> March 1, 2019	<b>MABAS DIVISION</b> 122
<b>BOX ALARM #</b> 89-1-6	<b>LOCATION OR AREA:</b> District Area 1 & 2 - West of Long Lake Road	<b>AUTHORIZED SIGNATURE:</b> Chief Joe Diener	

**LOCAL DISPATCH AREA:**

ALARM LEVEL	ENGINES	TENDERS	TRUCKS	SQUADS	AMBULANCES	CHIEFS	SPECIAL EQUIPMENT	CHANGE OF QUARTERS
STILL	Brillion 83 Brillion 84	Brillion 85	Ladder 82	Brillion 81	Gold Cross	Brillion 89		
Working Still	Potter					Potter	Hilbert - Hazmat Trailer	

**MABAS BOX ALARM:**

ALARM LEVEL	ENGINES	TENDERS	TRUCKS	SQUADS	AMBULANCES	CHIEFS	SPECIAL EQUIPMENT	CHANGE OF QUARTERS
BOX	Reedsville (MTSO)		Chilton	Forest Junction	T. of Brillion First Responders	Reedsville (MTSO) Forest Junction	Appleton (OUSO) - Hazmat Team	Notify Calumet Co. Emergency Management
2ND	Forest Junction	Forest Junction Potter Reedsville (MTSO)	New Holstein	Chilton		Chilton	Brillion DPW Kempen Excavating Jeanette Trucking American Red Cross	
3RD	Harrison	Chilton Harrison Greenleaf (BRSO)						*Contact MABAS WI Coordinator
4TH	Hollandtown (BRSO)		Kiel					
5TH								
<b>MABAS INTER-DIVISION REQUEST</b>	<b>1st Choice</b> 123 Winnebago	<b>2nd Choice</b> 120 Fond du Lac	<b>3rd Choice</b> 113 Sheboygan					

**SPECIAL INFORMATION**

American Red Cross - 1-800-236-8680 Option #9      Kempen Excavating - 920-756-3681  
 \*MABAS WI Coordinator/ WEM Duty Officer 1-800-943-0003 Option #2  
 Janette Excavating - 920-853-3454      Kempen Excavating - 920-756-3681

<b>DEPARTMENT NAME:</b> Brillion Fire	<b>BOX ALARM TYPE:</b> Disaster	<b>EFFECTIVE DATE:</b> March 1, 2019	<b>MABAS DIVISION</b> 122
<b>BOX ALARM #</b> 89-1-9	<b>LOCATION OR AREA:</b> District Wide (Area 1 & 2)	<b>AUTHORIZED SIGNATURE:</b> Chief Joe Diener	

**LOCAL DISPATCH AREA:**

ALARM LEVEL	ENGINES	TENDERS	TRUCKS	SQUADS	AMBULANCES	CHIEFS	SPECIAL EQUIPMENT	CHANGE OF QUARTERS
STILL	Brillion 83 Brillion 84	Brillion 85	Ladder 82	Brillion 81	Gold Cross	Brillion 89		
Working Still	Potter					Potter	Reedsville (MTSO) - RIT	

**MABAS BOX ALARM:**

ALARM LEVEL	ENGINES	TENDERS	TRUCKS	SQUADS	AMBULANCES	CHIEFS	SPECIAL EQUIPMENT	CHANGE OF QUARTERS
Box	Forest Junction Reedsville (MTSO)		Chilton	Hollandtown (BRSO) Harrison	T. of Brillion First Responders	Reedsville (MTSO) Forest Junction	Wisconsin Public Service	Notify Calumet Co. Emergency Management
2nd	Hilbert Hollandtown (BRSO)	Harrison Wayside (BRSO) Morrison(BRSO)	New Holstein	Chilton Valders (MTSO)	Reedsville First Responders (MTSO)	Hilbert	American Red Cross Brillion DPW Jannette Trucking Kempen Excavating	
3rd	Chilton Collins (MTSO)	Whitelaw (MTSO) Branch (MTSO) Greenleaf (BRSO)		Valders (MTSO) Greenleaf (BRSO)		Chilton		*Contact MABAS WI Coordinator
4th	Whitelaw (MTSO) Harrison	Stockbridge New Holstein Kiel (MTSO)						
5th								

<b>MABAS INTER-DIVISION REQUEST</b>	<b>1st Choice</b>	<b>2nd Choice</b>	<b>3rd Choice</b>
	123 Winnebago	120 Fond du Lac	113 Sheboygan

**SPECIAL INFORMATION**  
 American Red Cross - 1-800-236-8680 Option #9  
 \*MABAS WI Coordinator/ WEM Duty Officer 1-800-943-0003 Option #2  
 Jannette Excavating - 920-853-3454      Kempen Excavating - 920-756-3681

<b>DEPARTMENT NAME:</b> <b>BRILLION FIRE</b>	<b>BOX ALARM TYPE:</b> <b>Structure Fire -NON-Hydrant</b>	<b>EFFECTIVE DATE:</b> <b>March 1, 2019</b>	<b>MABAS DIVISION</b> <b>122</b>
<b>BOX ALARM #</b> <b>89-2-2</b>	<b>LOCATION OR AREA:</b> <b>District Area 2</b>	<b>AUTHORIZED SIGNATURE:</b> <b>Chief Joe Diener</b>	

**LOCAL DISPATCH AREA:**

ALARM LEVEL	ENGINES	TENDERS	TRUCKS	SQUADS	AMBULANCES	CHIEFS	SPECIAL EQUIPMENT	CHANGE OF QUARTERS
<b>STILL</b>	Brillion 83 Brillion 84	Brillion 85	Ladder 82	Brillion 81	Gold Cross	Brillion 89		
<b>Working Still</b>	Potter	Potter Forest Junction Reedsville (MTSO)		Forest Junction	T. of Brillion First Responders	Potter Forest Junction	Reedsville (MTSO) - RIT	

**MABAS BOX ALARM:**

ALARM LEVEL	ENGINES	TENDERS	TRUCKS	SQUADS	AMBULANCES	CHIEFS	SPECIAL EQUIPMENT	CHANGE OF QUARTERS
<b>Box</b>	Forest Junction- To Fill Site* Reedsville (MTSO)-To Fill Site*	Hilbert Hollandtown (BRSO) Wayside (BRSO)		Chilton		Chilton Reedsville (MTSO)	Wisconsin Public Service Harrison RIT	Notify Calumet Co. Emergency Management
<b>2nd</b>	Hollandtown (BRSO)	Greenleaf (BRSO) Morrison (BRSO) Collins (MTSO)	Chilton	Hilbert		Hollandtown (BRSO)	Kempen Excavating Notify Town of Brillion	
<b>3rd</b>	Wayside (BRSO)	Chilton Whitelaw (MTSO) Harrison Branch (MTSO)	New Holstein	Harrison		Harrison	Janette Excavating Salvation Army	*Contact MABAS WI Coordinator
<b>4TH</b>	Harrison	Stockbridge Menchalville (MTSO) Kellnersville (MTSO)		Wayside (BRSO)		Wayside (BRSO)		
<b>5th</b>	Greenleaf (BRSO)	New Holstein St. Anna Calumet (FDSO) T. of Buchanan (OUSO)	Kiel (MTSO)					
<b>MABAS INTER-DIVISION REQUEST</b>	<b>1st Choice</b> <b>123</b> <b>Winnebago</b>	<b>2nd Choice</b> <b>120</b> <b>Fond du Lac</b>	<b>3rd Choice</b> <b>113</b> <b>Sheboygan</b>					

**INFORMATION**

\*Engine to Fill Site: FJ to Harvestore Rd/ Boettcher Rd "Tamm's Pond"  
 \*Engine to Fill Site: Reedsville to Long Lake Rd/ ManCal Rd "Horn's Pond"  
 \*MABAS WI Coordinator/ WEM Duty Officer 1-800-943-0003 Option #2  
 American Red Cross - 1-800-236-8660 Option #9  
 Kempen Excavating - 920-756-3681      Jeanette Excavating - 920-853-3454



<b>DEPARTMENT NAME:</b> <b>BRILLION FIRE</b>	<b>BOX ALARM TYPE:</b> <b>Structure Fire - Non-Hydrant (Tender)</b>	<b>EFFECTIVE DATE:</b> <b>March 1, 2019</b>	<b>MABAS DIVISION</b> <b>122</b>
<b>BOX ALARM #</b> <b>89-3-2</b>	<b>LOCATION OR AREA:</b> <b>District AREA 3: East of Long Lake Road (Manitowoc County)</b>	<b>AUTHORIZED SIGNATURE:</b> <b>Chief Joe Diener</b>	

**LOCAL DISPATCH AREA:**

ALARM LEVEL	ENGINES	TENDERS	TRUCKS	SQUADS	AMBULANCES	CHIEFS	SPECIAL EQUIPMENT	CHANGE OF QUARTERS
STILL	Brillion 83 Brillion 84	Brillion 85	Ladder 82	Brillion 81	Valders Amb (MTSO) Reedsville (MTSO) First Responders	Brillion 89		
WORKING STILL	Reedsville (MTSO)	Potter Forest Junction Reedsville (MTSO)				Reedsville (MTSO)	Potter - RIT	

**MABAS BOX ALARM:**

ALARM LEVEL	ENGINES	TENDERS	TRUCKS	SQUADS	AMBULANCES	CHIEFS	SPECIAL EQUIPMENT	CHANGE OF QUARTERS
BOX	Forest Junction- To Fill Site Potter- To Fill Site	Collins (MTSO) Hollandtown (BRSO) Wayside (BRSO)		Forest Junction	Brillion First Responders	Potter Forest Junction	Wisconsin Public Service Harrison RIT	Notify Calumet Co. Emergency Management
2ND	Collins (MTSO)	Hilbert Valders (MTSO) Morrison (BRSO)	Chilton	Hollandtown (BRSO) Hilbert		Chilton Collins (MTSO)	Kempen Excavating	
3RD	Wayside (BRSO)-To Fill Site Valders (MTSO)	Chilton Branch (MTSO) Whitelaw (MTSO)	New Holstein	Chilton		Valders (MTSO)	Salvation Army Jeanette Excavating	*Contact MABAS WI Coordinator
4TH	Hollandtown (BRSO)	Harrison Menchalville (MTSO) Kellnersville (MTSO)		Harrison		Harrison		
5TH	Whitelaw (MTSO)	Stockbridge St. Anna New Holstein Calumet (FDSO) T. of Buchanan (OUSO)	Kiel (MTSO)					
<b>MABAS INTER-DIVISIONAL REQUEST</b>		<b>1st Choice</b> <b>123</b> <b>WINNEBAGO</b>	<b>2nd Choice</b> <b>120</b> <b>FOND DU LAC</b>	<b>3rd Choice</b> <b>113</b> <b>SHEBOYGAN</b>				

**SPECIAL INFORMATION**

\*Engine to Fill Site: FJ To Harvester Rd/ Boettcher Rd "Tamm's Pond"  
 \*Engine to Fill Site: Potter to Long Lake Rd/ ManCal Rd "Horn's Pond"  
 \*Engine to Fill Site: Wayside to Marquette Rd Fill Site  
 \*MABAS WI Coordinator/ WEM Duty Officer 1-800-943-0003 Option #2  
 American Red Cross - 1-800-236-8680 Option #9  
 Kempen Excavating - 920-756-3681      Jeanette Excavating - 920-853-3454

<b>DEPARTMENT NAME:</b> <b>BRILLION FIRE</b>	<b>BOX ALARM TYPE:</b> <b>BRUSH FIRE</b>	<b>EFFECTIVE DATE:</b> <b>March 1, 2019</b>	<b>MABAS DIVISION</b> <b>122</b>
<b>BOX ALARM #</b> <b>89-3-4</b>	<b>LOCATION OR AREA:</b> <b>District AREA 3: East of Long Lake Road (Manitowoc County)</b>	<b>AUTHORIZED SIGNATURE:</b> <b>Chief Joe Diener</b>	

**LOCAL DISPATCH AREA:**

ALARM LEVEL	ENGINES	TENDERS	TRUCKS	SQUADS	AMBULANCES	CHIEFS	SPECIAL EQUIPMENT	CHANGE OF QUARTERS
<b>STILL</b>	Brillion 83 Brillion 84	Brillion 85	Ladder 82	Brillion 81	Valders Amb (MTSO) Reedsville (MTSO) First Responders	Brillion 89	6x6	
<b>Working Still</b>	Reedsville (MTSO)	Potter Reedsville (MTSO) Forest Junction				Reedsville (MTSO)	Potter - ATV Reedsville (MTSO) - Brush Truck	

**MABAS BOX ALARM:**

ALARM LEVEL	ENGINES	TENDERS	TRUCKS	SQUADS	AMBULANCES	CHIEFS	SPECIAL EQUIPMENT	CHANGE OF QUARTERS
<b>Box</b>	Forest Junction-To Fill Site Potter- To Fill Site	Collins (MTSO) Hollandtown (BRSO) Wayside (BRSO)		Forest Junction		Forest Junction Potter	Harrison - Brush Truck Harrison 4x4 Valders (MTSO)-Brush Truck	Notify Calumet Co. Emergency Management
<b>2nd</b>	Collins (MTSO) Hollandtown (BRSO)	Hilbert Greenleaf (BRSO) Morrison (BRSO)		Chilton		Hollandtown (BRSO) Chilton	Chilton Brush Truck Collins (MTSO) 4x4 Kiel (MTSO) Brush Truck	
<b>3rd</b>	Wayside (BRSO)- To Fill Site Hilbert	Harrison Valders (MTSO) Whitelaw (MTSO)		Greenleaf (BRSO)		Wayside (BRSO)	New Holstein 4x4 Greenleaf (BRSO) Brush Truck Whitelaw (MTSO) Brush Truck	*Contact MABAS WI Coordinator
<b>4TH</b>	Menchalville (MTSO) Morrison (BRSO)	Menchalville (MTSO) Kellnersville (MTSO) Branch (MTSO)		Hollandtown (BRSO)			St. Nazianz (MTSO) ATV Wayside (BRSO) Brush Truck	
<b>5th</b>		Stockbridge New Holstein Maribel (MTSO)						
<b>MABAS INTER-DIVISION REQUEST</b>	<b>1st Choice</b> 123 Winnebago	<b>2nd Choice</b> 120 Fond du Lac	<b>3rd Choice</b> 113 Sheboygan					

**INFORMATION**  
 \*Engine to Fill Site: FJ To Harvestore Rd/ Boettcher Rd "Tamm's Pond"  
 \*Engine to Fill Site: Potter to Long Lake Rd/ ManCal Rd "Horn's Pond"  
 \*Engine to Fill Site: Wayside to Marquette Rd Fill Site  
 \*MABAS WI Coordinator/ WEM Duty Officer 1-800-943-0003 Option #2  
 American Red Cross - 1-800-236-8660 Option #9

<b>DEPARTMENT NAME:</b> <b>Brillion Fire</b>	<b>BOX ALARM TYPE:</b> <b>Hazmat</b>	<b>EFFECTIVE DATE:</b> <b>March 1, 2019</b>	<b>MABAS DIVISION</b> <b>122</b>
<b>BOX ALARM #</b> <b>89-3-6</b>	<b>LOCATION OR AREA:</b> <b>District Area 3 - East of Long Lake Road (Manitowoc County)</b>	<b>AUTHORIZED SIGNATURE:</b> <b>Chief Joe Diener</b>	

**LOCAL DISPATCH AREA:**

ALARM LEVEL	ENGINES	TENDERS	TRUCKS	SQUADS	AMBULANCES	CHIEFS	SPECIAL EQUIPMENT	CHANGE OF QUARTERS
<b>STILL</b>	Brillion 83 Brillion 84	Brillion 85	Ladder 82	Brillion 81	Valders Amb (MTSO) Reedsville (MTSO) First Responders	Brillion 89		
<b>Working Still</b>	Reedsville (MTSO)					Reedsville (MTSO)	MTSO HAZMAT Trailer	

**MABAS BOX ALARM:**

ALARM LEVEL	ENGINES	TENDERS	TRUCKS	SQUADS	AMBULANCES	CHIEFS	SPECIAL EQUIPMENT	CHANGE OF QUARTERS
<b>BOX</b>	Potter		Chilton	Forest Junction	T. of Brillion First Responders	Potter Forest Junction	Hilbert HAZMAT Trailer	Notify Manitowoc Co. Emergency Management
<b>2ND</b>	Collins (MTSO)	Potter Forest Junction Reedsville (MTSO)	New Holstein	Chilton		Chilton	MTSO Command Trailer  American Red Cross	
<b>3RD</b>	Forest Junction	Harrison Wayside (BRSO) Whitelaw (MTSO)						*Contact MABAS WI Coordinator
<b>4TH</b>	Chilton		Kiel (MTSO)				Appleton HAZMAT (OUSO)	
<b>5TH</b>	Valders (MTSO)							
<b>MABAS INTER-DIVISION REQUEST</b>		<b>1st Choice</b> 123 Winnebago	<b>2nd Choice</b> 120 Fond du Lac	<b>3rd Choice</b> 113 Sheboygan				

**SPECIAL INFORMATION**

American Red Cross - 1-800-236-8680 Option #9

\*MABAS WI Coordinator/ WEM Duty Officer 1-800-943-0003 Option #2