

Health and Human Services

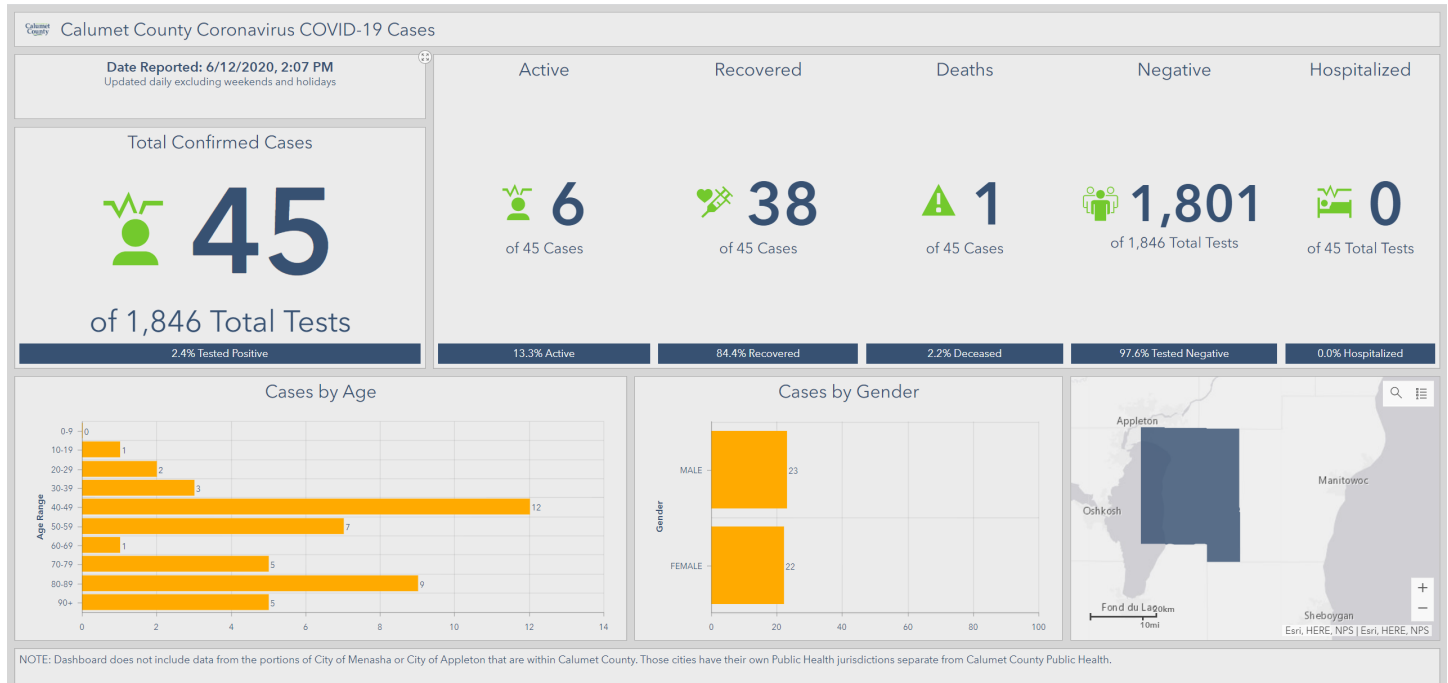
Calumet County Public Health Covid-19 Status Update

June 12, 2020

CALUMET COUNTY COVID-19 CASES AND DATA DASHBOARD

NOTE: Dashboard does not include data from the portions of City of Menasha or City of Appleton that are within Calumet County. Those cities have their own Public Health jurisdictions separate from Calumet County Public Health.

- [Mobile Version](#)
- [Desktop Version](#)



WHAT'S NEW

- Looking for possible ways to get tested? Check out: [How to Get Tested page](#) and [Community Testing Sites page](#)
- [Wisconsin National Guard Conducting Mobile Testing at Sites Around the State](#)
- [Eligibility Changes for WI Medicaid and BadgerCare Plus Deductible Plans](#)

OFFICIAL WEBSITES TO ACCESS STATE, REGIONAL, AND COUNTY DATA

- [Wisconsin COVID-19 cases mapped by County](#)



- [Wisconsin DHS COVID-19 State and County summary data](#)
- [Wisconsin DHS Facility Investigations by region and county](#)
- [Wisconsin Hospital Association \(WHA\) COVID-19 hospitalization data by region](#)
- The Department of Health Services' [COVID-19 testing map](#) tracks community testing sites across the state.
- [Reopening Calumet County - Public Health Recommendations Guide](#)

ADDITIONAL INFORMATION

- List of all [CDC updates](#) in chronologically order
- List of Previous Press releases from [WI Department of Health Services](#)
- List of Previous Executive and emergency orders from [WI Department of Health Services](#)

REMINDERS

- **Call your healthcare provider before going into a clinic if you are experiencing mild to moderate symptoms of COVID-19.**
 - This will allow them to provide guidance, prepare ahead if you need to be seen, and minimize risk to others.
- **If you have any immediate questions, please call the United Way's Resource Line to speak with a trained specialist. It is available 24/7 for non-emergency questions about COVID-19 and referrals to local health and human services.**
 - Dial 211 on your phone
 - Text "COVID19" to 211-211 to receive links to CDC information.
 - Visit <http://211.org/>
 - Or contact Calumet County Public Health during business hours (Monday-Friday; 8:00 AM - 4:30 PM) at 920-849-1432.
- Visit the [Calumet County COVID-19 webpage](#) and scroll down to the 'Resources and FAQs' tab for a variety of helpful resources regarding COVID-19.